

PHILIP VILE

Housing Project of the Year

Paradise Gardens by Lifschutz Davidson Sandilands

The judges said they were delighted by the very high standard of entries in this category. The winner stood out, however, for creating a development of six beautiful homes in a busy and built-up conservation area next to Ravenscourt Park in west London.

Lifschutz Davidson Sandilands acted as developer as well as architect on this Private Rented Sector (PRS) project. The resulting scheme is a contemporary response to the local vernacular with five three-storey homes forming a terrace that steps incrementally forward along its length.

A sixth two-storey house sits within the walls of Latymer House, which once stood on the site. The terraced homes share mature communal gardens, handsome buff-coloured brick detailing and shallow-pitched zinc roofs.

The judges praised the robust and straightforward details at Paradise Gardens, which they said had been delivered with 'loving care', and the communal gardens between the back of the terrace and the nearby District Line, which demonstrated 'exceptional' collaboration with the landscape architect.

One said: 'These are great houses surrounded by high-quality landscaping. The quality is perfect.' *WH*

Shortlist



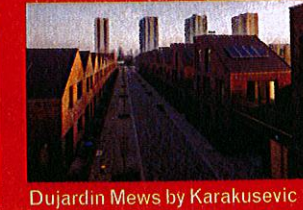
Bracelet Close
by Bell Phillips Architects



Carrowbreck Meadow
by Hamson Barron Smith



Chapter House by Proctor and
Matthews Architects



Dujardin Mews by Karakusevic
Carson Architects and
MaccreeanorLavington



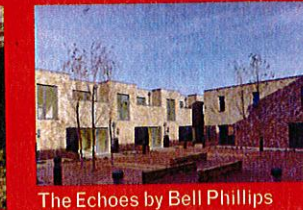
Hafer Road by Peter Barber
Architects



New Ground Cohousing by
Pollard Thomas Edwards

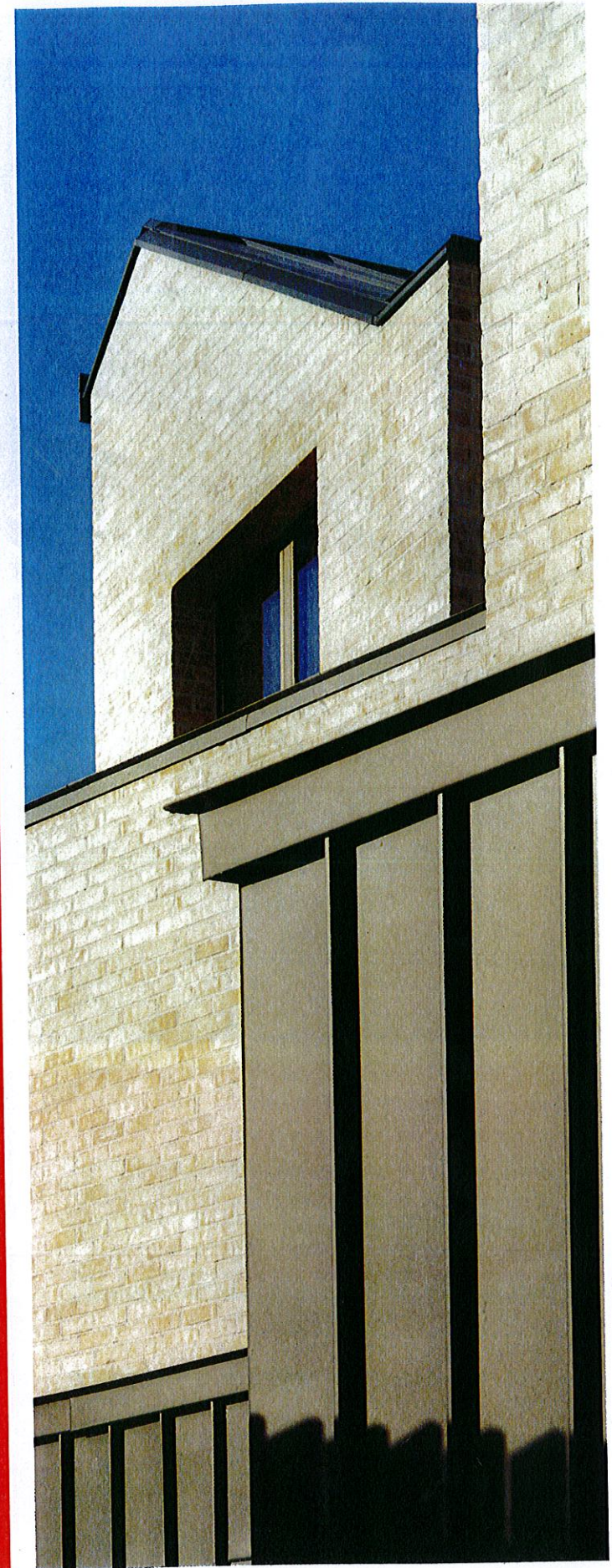


Silchester by Haworth Tompkins



The Echoes by Bell Phillips
Architects

CLOCKWISE: KILIAN O'SULLIVAN, JEFFERSON SMITH, MARK HADDEN, TIM CROCKER, KILIAN O'SULLIVAN, PHILIP VILE, MORLEY VON STERNBERG, TIM CROCKER



PHILIP VILE