

## FIRST LOOK

# Carmody Groarke reveals first images of Manchester science museum gallery

11 MARCH 2021 BY [FRAN WILLIAMS](#) AJ PHOTOGRAPHY BY GILBERT MCCARRAGHER



Detailed section through new gallery wall

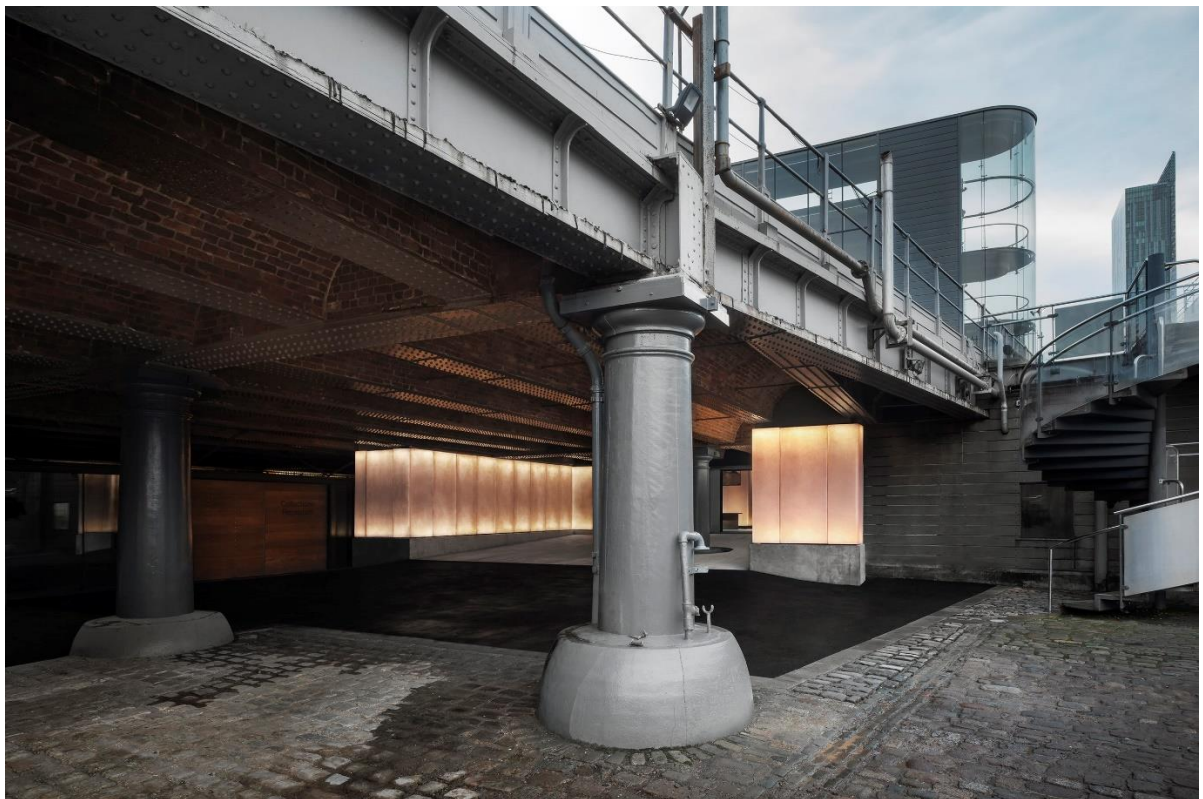
The first photographs of Carmody Groarke's temporary exhibitions gallery for Manchester's Science and Industry Museum have been released

Carmody Groarke [won the go-ahead](#) for the new £5 million temporary exhibitions gallery in 2016 after [landing the job in November 2015](#), having beaten HAT Projects, Reiach and Hall, John McAslan & Partners, Feilden Clegg Bradley Studios and Adam Richards.

Originally planned to complete by the end of 2018, the 725m<sup>2</sup> project aims to create an 'outstanding architectural space for temporary exhibitions' within railway arches and lower ground floor vaults of an 1830 Grade II-listed New Warehouse.

It is the first part to be completed as part of the museum's long-term restoration and renovation programme.

The museum's historic structure is part of the world's oldest surviving railway station complex known as Manchester Liverpool Road.



The scheme creates a new visitor route, linking the complex's Lower Yard with the busier museum levels above.

A new entrance from this Lower Yard restores the vaulted undercroft of the historic viaduct – also known as 'Pineapple Line' because railway tracks run

over into the New Warehouse – making this arrival space a place for orienting visitors.

Contrasting with existing heavy Victorian structures overhead (originally designed to support the weight of goods wagons), full-height, fibreglass panelled walls, which are backlit, highlight the visitor entrance. Each panel has been hand cast and tinted with a terracotta hue to complement the surrounding brickwork.

The external ramped entrance creates step-free access for all visitors and allows for larger pieces to be transported inside the museum.

Inside, the foyer contains welcome functions and a large open-plan events space which leads directly on to the new Special Exhibitions Gallery which restores the character of the existing warehouse, highlighting its composite cast-iron and brick structure and 5m-high ceilings.

Passive environmental design has been used wherever possible to reduce life-cycle costing, save carbon and reduce visual impact on the exhibition space. For example, new walls have been bolstered with hygroscopic mass to reduce the need for dehumidification.

The city centre museum (previously MOSI) is part of the London-based Science Museum Group, and has occupied the Grade I-listed warehouse and former station since 1983.

The gallery is the first project to be completed in the museum's multimillion-pound masterplan which seeks to conserve and open up its buildings.

Due to current restrictions, the museum remains temporarily closed. The new gallery's inaugural exhibition will be Top Secret: From Ciphers to Cyber Security, curated by the Science Museum Group with the help of UK intelligence and cyber agency GCHQ - Manchester is also home to their (?) newest office at Heron House in Albert Square.

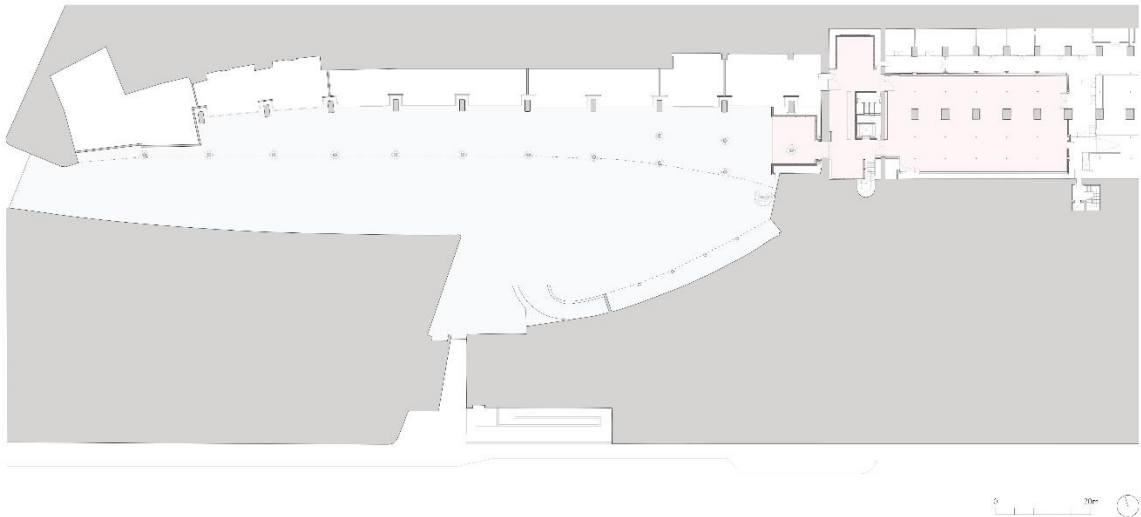




## Architect's view

We were inspired by the powerful presence and character of the Victorian engineering and architecture when designing the new Special Exhibitions Gallery. By counterpointing the carefully restored historic building fabric with bold new materials, our architectural interventions reframe and repurpose the already wonderful spaces within the New Warehouse as a backdrop for exhibitions and visitor welcome.

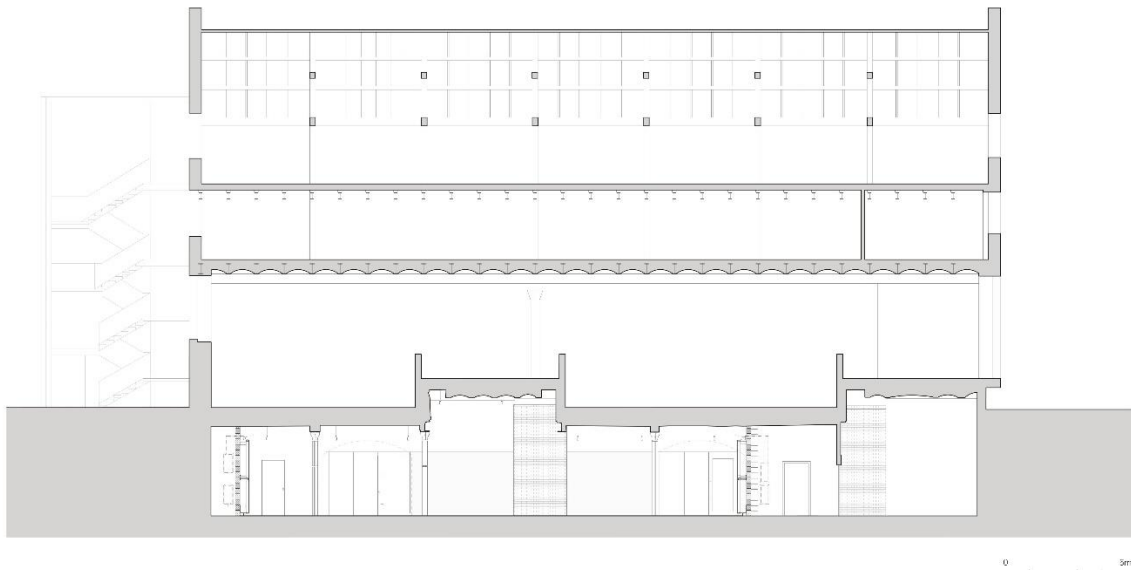
*Andy Groarke, director, Carmody Groarke*



## Client's view

We are dedicated to inspiring audiences with ideas that change the world. This year has brought home to all of us how fundamentally science shapes our lives. As we all rebuild personally, socially and culturally, and look forward to better things in 2021, we can't wait to share this phenomenal new exhibition space. Our new Special Exhibitions Gallery will deliver a real step-change in increasing access to incredible science exhibitions and collections. It is the first project in our long-term multimillion-pound restoration programme to conserve our historic buildings, open up new spaces for all to enjoy, play and learn in and to generate vital skills opportunities to support our innovators of the future.

*Sally MacDonald, director, Science and Industry Museum*



## Project data

**Start on site** November 2019

**Completion date** January 2021

**Project area** 725m<sup>2</sup>

**Project value** £5 million

**Funding** Department for Digital, Culture, Media and Sport, Wellcome and Garfield Weston Foundation, The Kirby Laing Foundation, The Zochonis Charitable Trust

**Client** Science Museum Group

Architect, lead designer and principal designer Carmody Groarke

**Structural engineer** Price & Myers

**Service engineer** Skelly & Couch

**Cost consultant** Appleyard & Trew

**Project manager** Gardiner & Theobald

**Heritage consultant** Heritage Architecture

**Planning consultant** Deloitte Real Estate

**Approved inspector** Butler and Young

**Fire engineer** Design Fire Consultants

**Main contractor** HH Smith & Sons